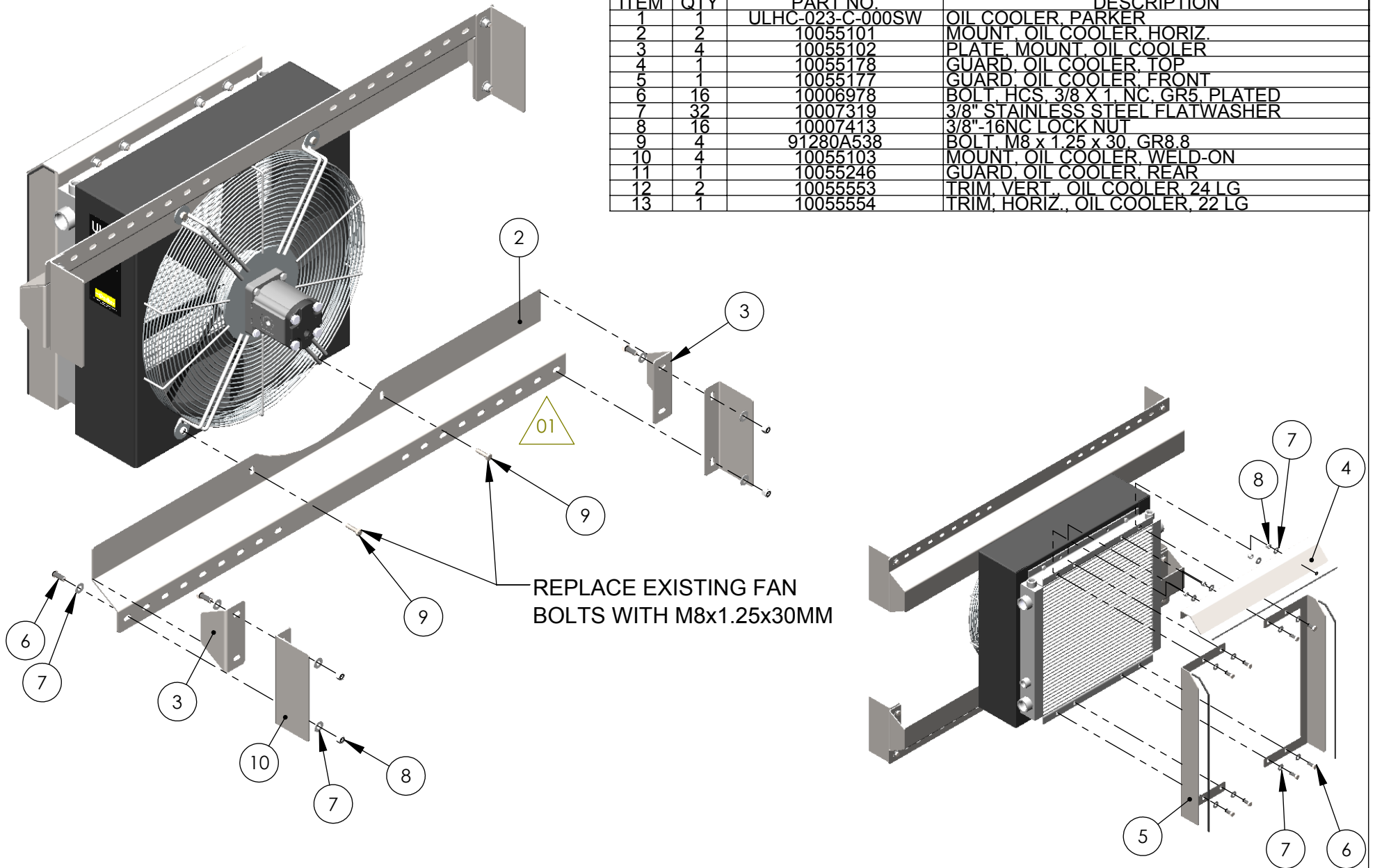
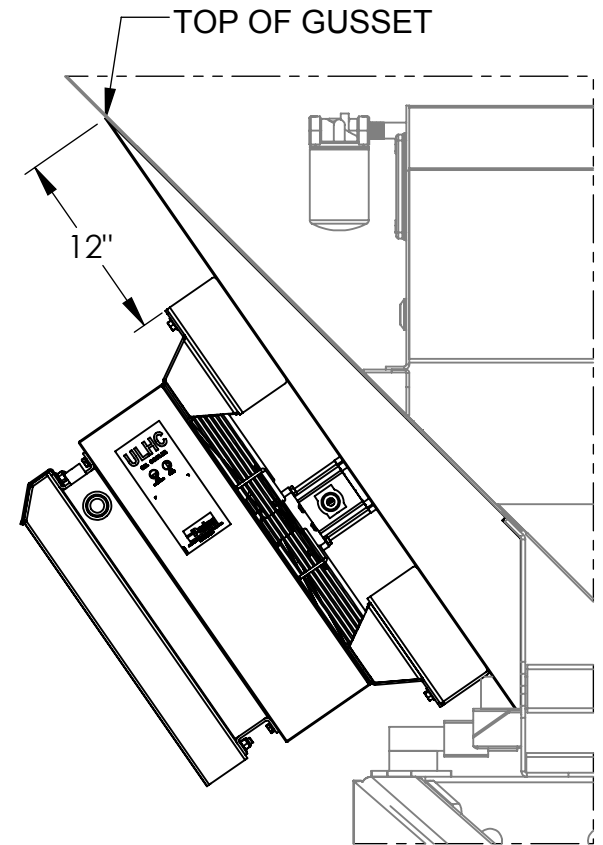
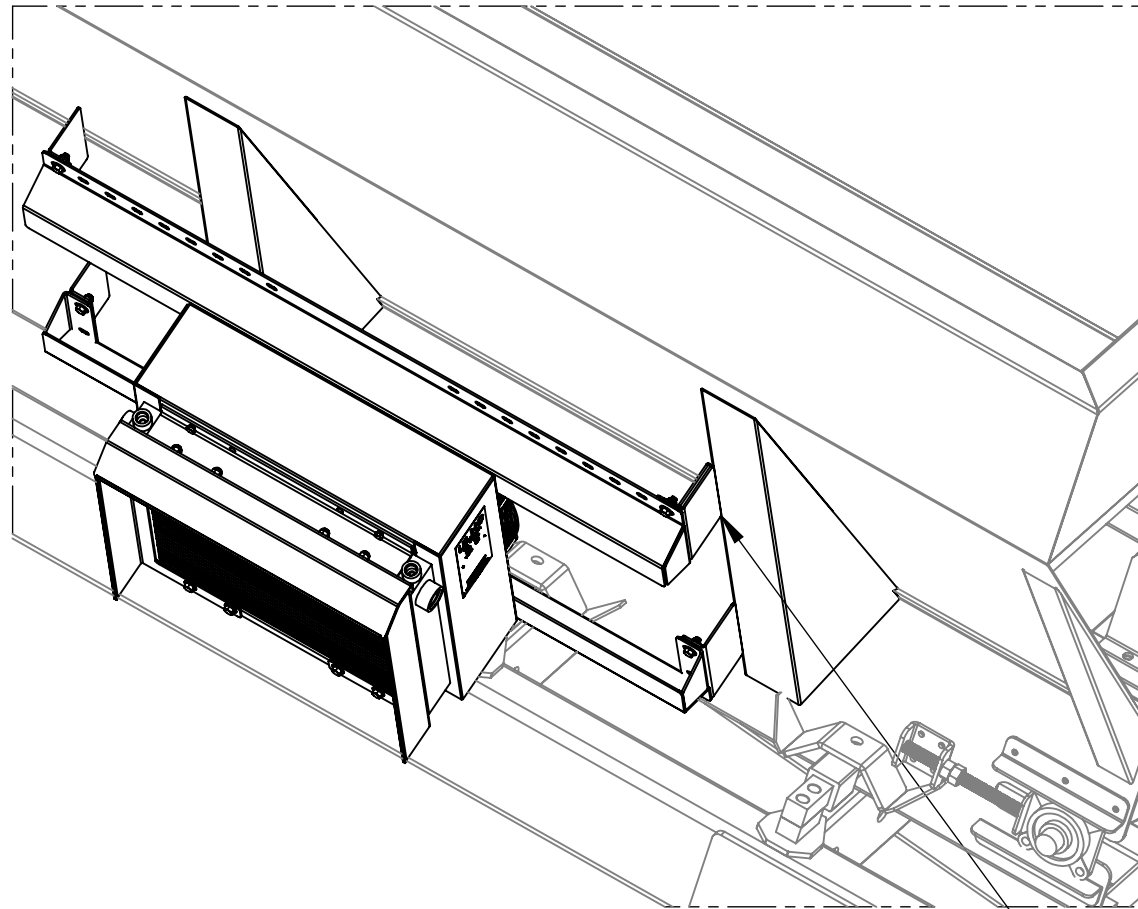


ITEM	QTY	PART NO.	DESCRIPTION
1	1	ULHC-023-C-000SW	OIL COOLER, PARKER
2	2	10055101	MOUNT, OIL COOLER, HORIZ.
3	4	10055102	PLATE, MOUNT, OIL COOLER
4	1	10055178	GUARD, OIL COOLER, TOP
5	1	10055177	GUARD, OIL COOLER, FRONT
6	16	10006978	BOLT, HCS, 3/8 X 1, NC, GR5, PLATED
7	32	10007319	3/8" STAINLESS STEEL FLATWASHER
8	16	10007413	3/8"-16NC LOCK NUT
9	4	91280A538	BOLT, M8 x 1.25 x 30, GR8.8
10	4	10055103	MOUNT, OIL COOLER, WELD-ON
11	1	10055246	GUARD, OIL COOLER, REAR
12	2	10055553	TRIM, VERT., OIL COOLER, 24 LG
13	1	10055554	TRIM, HORIZ., OIL COOLER, 22 LG



01	2016/12/08	ADDED MOUNTING HOLES	JSF	PAINT:	MATERIAL:	PARTS	SHEET SIZE: A
				WEIGHT #	DESCRIPTION: ASSY, OIL COOLER, PARKER		
				TOLERANCE UNLESS NOTED			
REV	DATE	DESCRIPTION	INIT.	.XXX +/- .005	DR'N BY:	DATE:	REV:
				.XX +/- .010	JSF	2016/11/29	01
				.X +/- .020	SCALE:	SHEET:	PART NUMBER:
				X +/- .40	1:16	1 OF 5	10055100
				FRACTIONS +/- 1/16			
				ANGLES +/- 1/2 DEG			

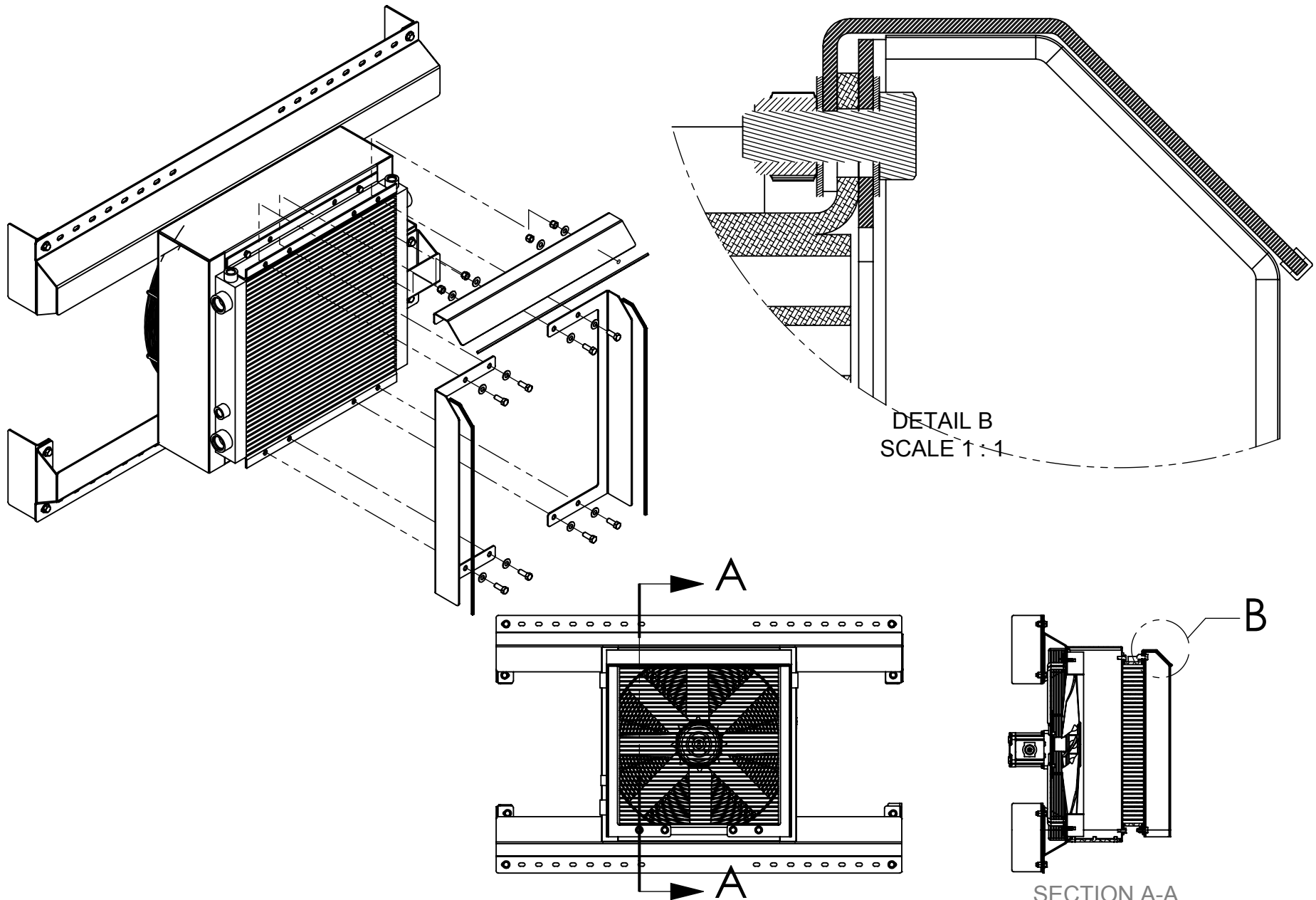
SALFORD
Valmar BBI AerWay



FRONT VIEW

WELD 10055103 ALONG BEND IN GUSSET

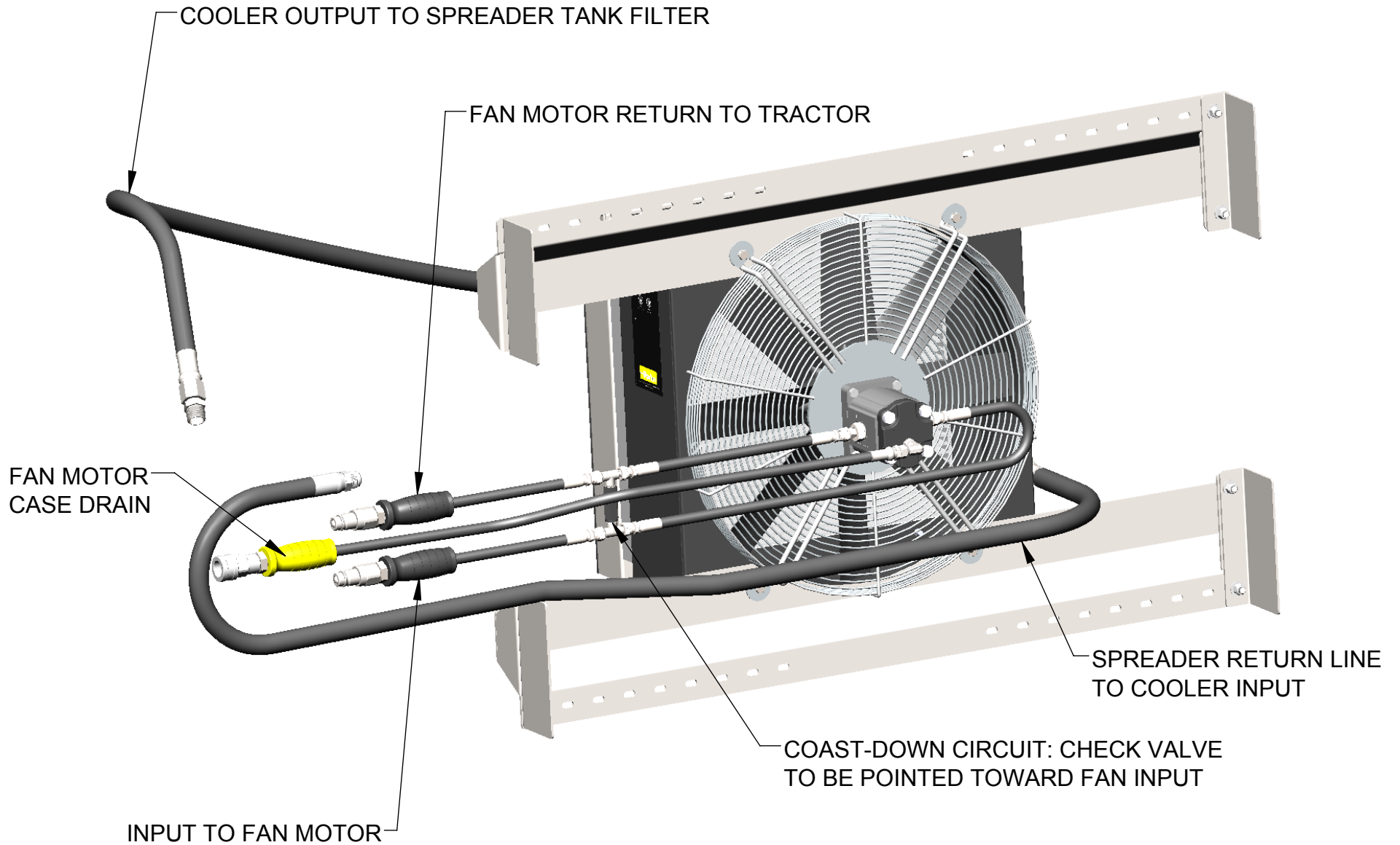
				PAINT:	NONE	MATERIAL:		SHEET SIZE:	A		
				WEIGHT #	7889.69	DESCRIPTION:					
				20'pthp4520-Revised 102815							
REV	DATE	DESCRIPTION	INIT.	TOLERANCE UNLESS NOTED						THIS DRAWING CONTAINS CONFIDENTIAL AND/OR PRIVILEGED INFORMATION. THIS DRAWING AND ANY INFORMATION CONTAINED THEREIN SHALL NOT BE REPRODUCED OR USED IN ANY WAY DETRIMENTAL TO THE INTEREST OF SALFORD GROUP INC.	
				.XXX	+/- .005	DR'N BY:	DATE:	REV:	PART NUMBER:		
				.XX	+/- .010	JSF	2016/11/29	20'pthp4520-Revised 102815			
Valmar BBI AerWay				X	+/- .020	SCALE:	SHEET:	1:96 2 OF 5			
				X	+/- .40						
				FRACTIONS +/- 1/16							
				ANGLES +/- 1/2 DEG							



DETAIL B
SCALE 1:1

SECTION A-A

01	2016/12/08	ADDED MOUNTING HOLES	JSF	PAINT:	MATERIAL:	PARTS	SHEET SIZE:	A
REV	DATE	DESCRIPTION	INIT.	WEIGHT #	DESCRIPTION:			
				96.90	ASSY, OIL COOLER, PARKER			
				TOLERANCE UNLESS NOTED .XXX +/- .005 .XX +/- .010 .X +/- .020 X +/- .40 FRACTIONS +/- 1/16 ANGLES +/- 1/2 DEG				
				DR'N BY: JSF	DATE: 2016/11/29	REV: 01	PART NUMBER: 10055100	
Valmar	BBI	AerWay		SCALE:	SHEET:	1:16	3 OF 5	



				PAINT:	MATERIAL:		
				WEIGHT #	PARTS		
REV	DATE	DESCRIPTION	INIT.	116.93	DESCRIPTION: ASSY, OIL COOLER, PARKER		
				TOLERANCE UNLESS NOTED	SHEET SIZE: A THIS DRAWING CONTAINS CONFIDENTIAL AND/OR PRIVILEGED INFORMATION. THIS DRAWING AND ANY INFORMATION CONTAINED THEREIN SHALL NOT BE REPRODUCED OR USED IN ANY WAY DETRIMENTAL TO THE INTEREST OF SALFORD GROUP INC.		
				.XXX +/- .005			
Valmar	BBI	AerWay		.XX +/- .010	SCALE: 1:32	SHEET: 4 OF 5	10055100
				.X +/- .020			
				X +/- .40			
				FRACTIONS +/- 1/16			
				ANGLES +/- 1/2 DEG			